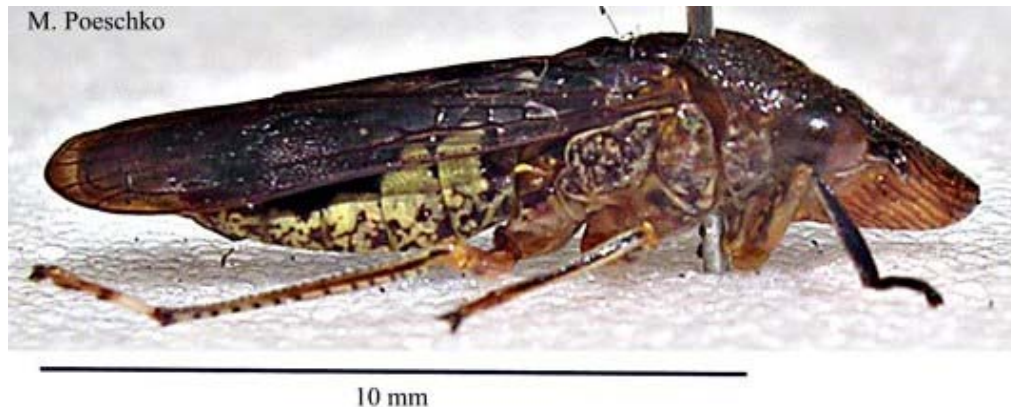


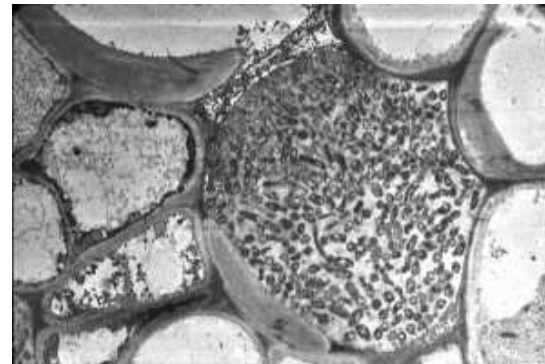
# Glassy-winged Sharpshooter

- Largest of many sharpshooters from America
- Vector of Pierce's disease (*Xylella fastidiosa*)
- Has wide feeding host range
- Not known to cause direct plant health issues
- Currently limited to California, southern USA, Central America, Hawaii, Tahiti and now the Cook Islands



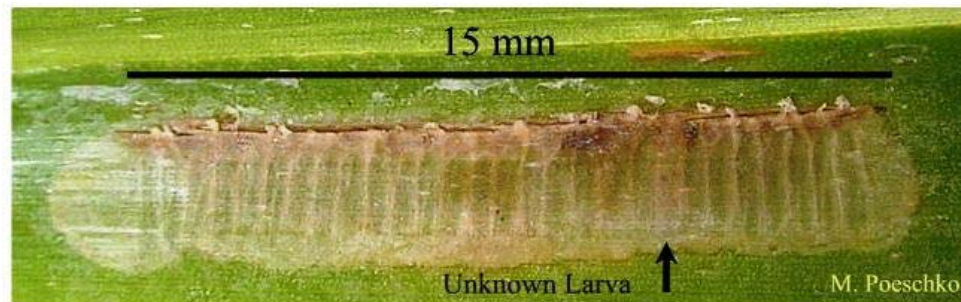
# Pierces disease

- Lethal to grapevines
- Wide host range (over 140 species)
- Probably limited to USA - Unlikely to be in NZ
- MAF pest risk assessments note both PD and GWSS could establish in the NZ environment



# GWSS in Cook Islands

- Formal identification - 2 April
- Probably introduced as eggs
- Breeding in Cook Islands confirmed
- Eradication programme unlikely, parasites not found
- Surveillance on produce to NZ heightened
- Real risk of hitchhiking on passenger transport
- Air cargo/travel pathway under review by MAF



# Going forward

- Continue to suggest aggressive management in Cook Islands
- Ensure MAF review of pathways is completed
- Consider changes to import /air transport protocols
- Ensure border surveillance remains vigilant
- Update education package for industry