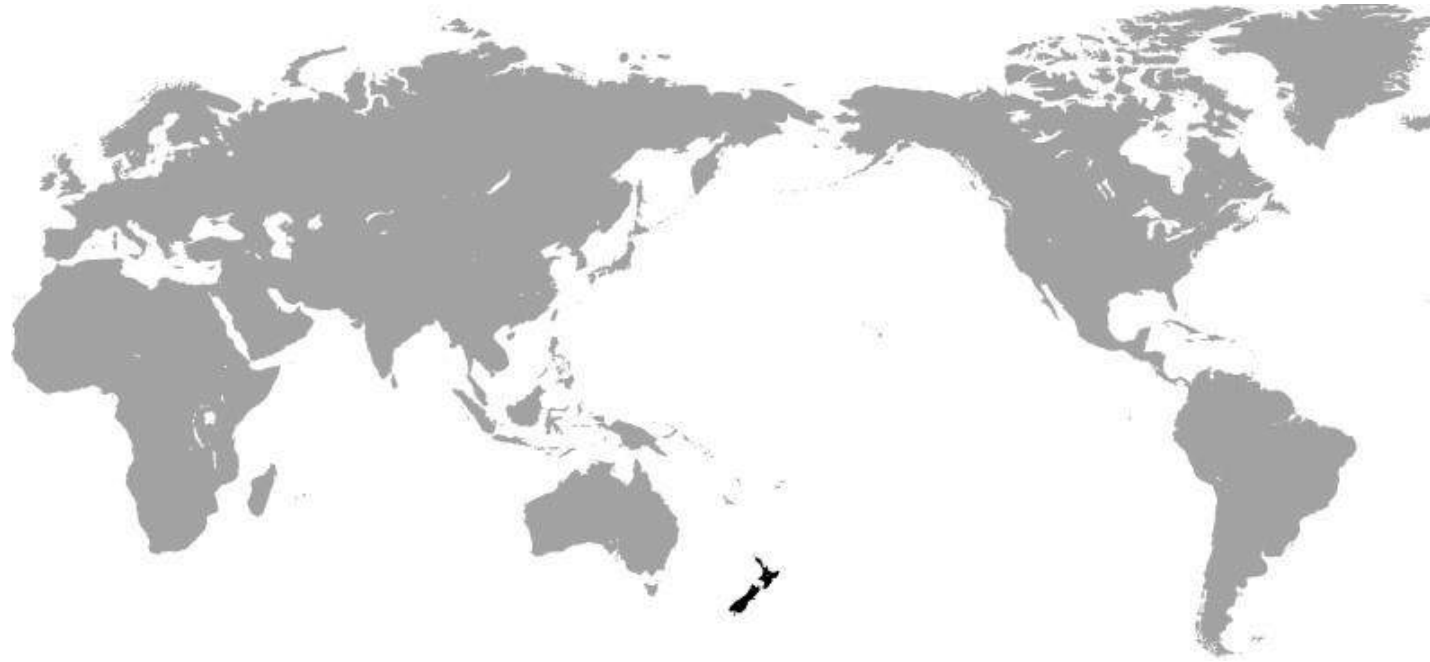


NEW ZEALAND WINE

OVERVIEW, REGIONS, VARIETIES



NEW ZEALAND WINE



1%

OF TOTAL WORLD WINE
PRODUCTION (VOLUME)

**35°-45°
SOUTH**

GRAPE GROWING LATITUDINAL RANGE

96%

OF NEW ZEALAND VINEYARD AREA
OPERATES UNDER INDEPENDENTLY
AUDITED SUSTAINABILITY
PROGRAMMES



NEW ZEALAND WINE
PURE DISCOVERY

REGIONS

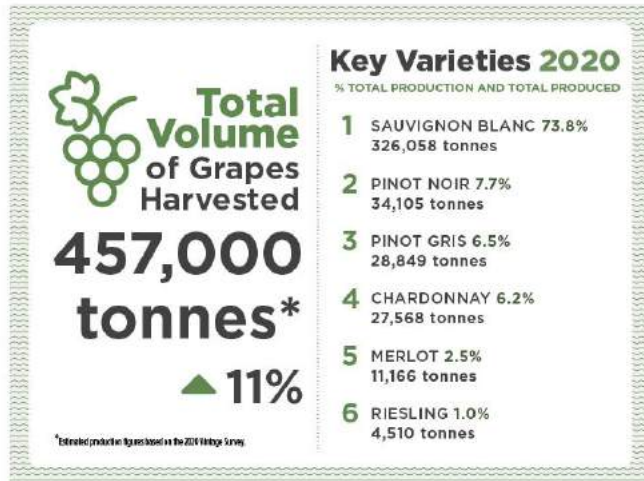
- Northland
- Auckland
- Gisborne
- Hawke's Bay
- Wairarapa
- Nelson
- Marlborough
- North Canterbury
- Waitaki Valley, North Otago
- Central Otago



2020 VINTAGE INDICATORS



Vintage Indicators - Variety 2020



% Change on Last Year

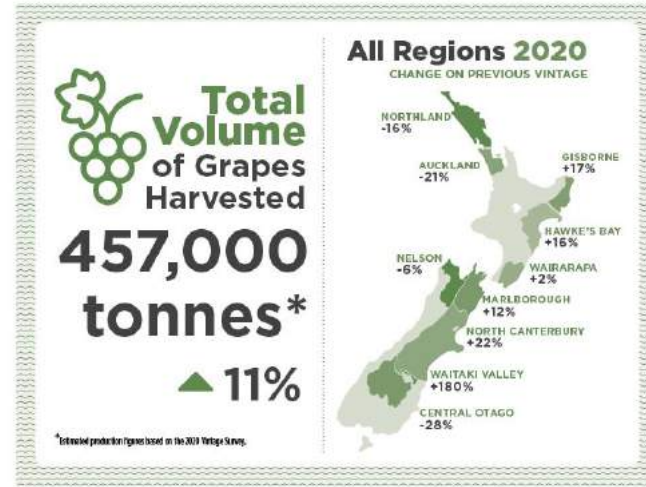
KEY VARIETIES



Statistics collected from 2020 Vintage Survey



Vintage Indicators - Region 2020



Tonnage Per Region

% OF TOTAL HARVEST



Statistics collected from 2020 Vintage Survey

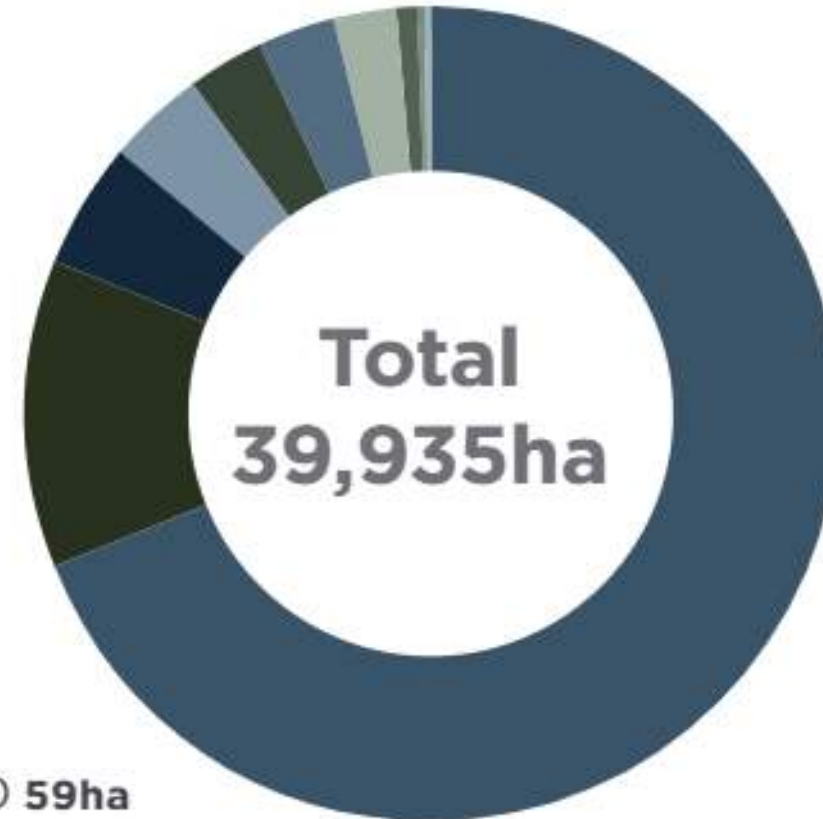


SUSTAINABLE NEW ZEALAND WINE

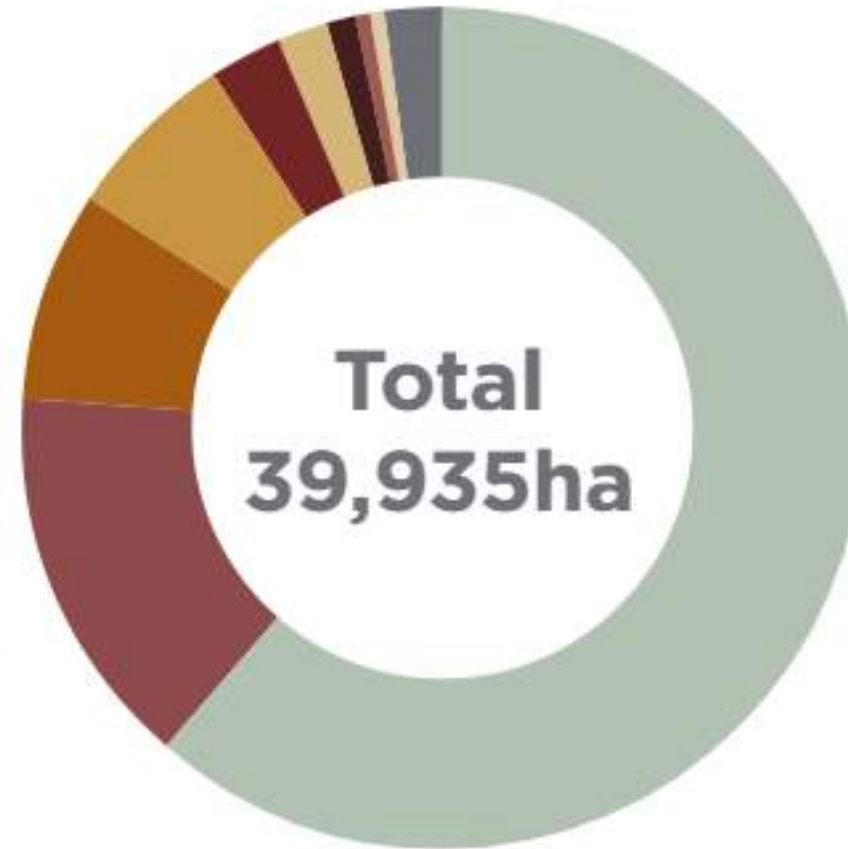
96% of New Zealand's vineyard producing area is certified as sustainable, with 10% of wineries certified as organic



PRODUCING VINEYARD AREA



KEY VARIETIES



NEW ZEALAND WINE REGIONS



NORTHLAND



NORTHLAND

71

TOTAL PRODUCING HECTARES

<1

TOTAL PRODUCTION (000 TONNES)

<1%

PROPORTION OF TOTAL NZ PRODUCTION (TONNES)



Pacific Ocean

Doubtless Bay

Kaitaia

Kerikeri

PAIHIA

Bay of Islands

Kaikohe

Tutukaka

WHANGAREI

Whangarei

DARGAVILLE

Tasman Sea

Mangawhai



KEY VARIETIES

71 HECTARES

CHARDONNAY 18ha - 34%

SYRAH 12ha - 15%

PINOT GRIS 11ha - 14%

MERLOT 7ha - 9%

OTHER (21 VARIETIES) 27ha - 34%

AUCKLAND



AUCKLAND

319

TOTAL PRODUCING HECTARES

2

TOTAL PRODUCTION (000 TONNES)

<1%

PROPORTION OF TOTAL NZ PRODUCTION (TONNES)



Matakana*

Hauraki Gulf

WAIMAUKU

HUAPAI

KUMEU

Kumeu*

Waiheke Island*

AUCKLAND

Clevedon

* Geographical Indication



KEY VARIETIES

319 HECTARES

CHARDONNAY 81ha - 25%

SYRAH 51ha - 16%

PINOT GRIS 36ha - 12%

MERLOT 36ha - 11%

CABERNET SAUVIGNON 20ha - 6%

CABERNET FRANC 20ha - 6%

OTHER (30 VARIETIES) 75ha - 23%

GISBORNE

An aerial photograph of a vineyard in Gisborne, New Zealand. The image shows a hillside covered in rows of grapevines, with a dirt road winding through the center. The vineyard is surrounded by lush green trees and a wooden fence in the foreground. The word "GISBORNE" is overlaid in large white letters across the top center of the image.

GISBORNE

1,192

TOTAL PRODUCING HECTARES

16

TOTAL PRODUCTION (000 TONNES)

4%

PROPORTION OF TOTAL NZ PRODUCTION (TONNES)



Te Karaka

Ormond

Waipaoa

Ormond Valley

Hexton Hills

Patutahi Plateau

Patutahi

Central Valley

Riverpoint

GISBORNE

Manutuke

Waipaoa R.

Poverty Bay

Young Nicks Head





KEY VARIETIES

1,192 HECTARES

CHARDONNAY 620ha - 52%

PINOT GRIS 256ha - 21%

SAUVIGNON BLANC 169ha - 14%

GEWÜRZTRAMINER 32ha - 3%

MERLOT 25ha - 2%

OTHER (17 VARIETIES) 90ha - 8%

HAWKE'S BAY

An aerial photograph of a vineyard in Hawke's Bay, New Zealand. The image shows several distinct sections of grapevines. On the right side, there are neat, parallel rows of vines that appear to be in the early stages of ripening, with a mix of green and light brown leaves. To the left of these rows, there is a large, irregularly shaped area where the vines are more densely packed and have turned a deep golden-brown or orange color, indicating they are further along in the ripening process. The vineyard is divided into sections by dark, straight paths or roads. The overall lighting is warm and golden, suggesting the sun is low in the sky, creating long shadows and highlighting the textures of the leaves and the layout of the vineyard.

HAWKE'S BAY

5,034

TOTAL PRODUCING HECTARES

37

TOTAL PRODUCTION (000 TONNES)

9%

PROPORTION OF TOTAL NZ PRODUCTION (TONNES)





KEY VARIETIES

5,034 HECTARES

SAUVIGNON BLANC 1,311ha - 26%

CHARDONNAY 1,084ha - 22%

MERLOT 981ha - 19%

PINOT GRIS 555ha - 11%

SYRAH 339ha - 7%

PINOT NOIR 227ha - 5%

CABERNET SAUVIGNON 193ha - 4%

OTHER (31 VARIETIES) 323ha - 6%

WAIRARAPA



WAIRARAPA

1040

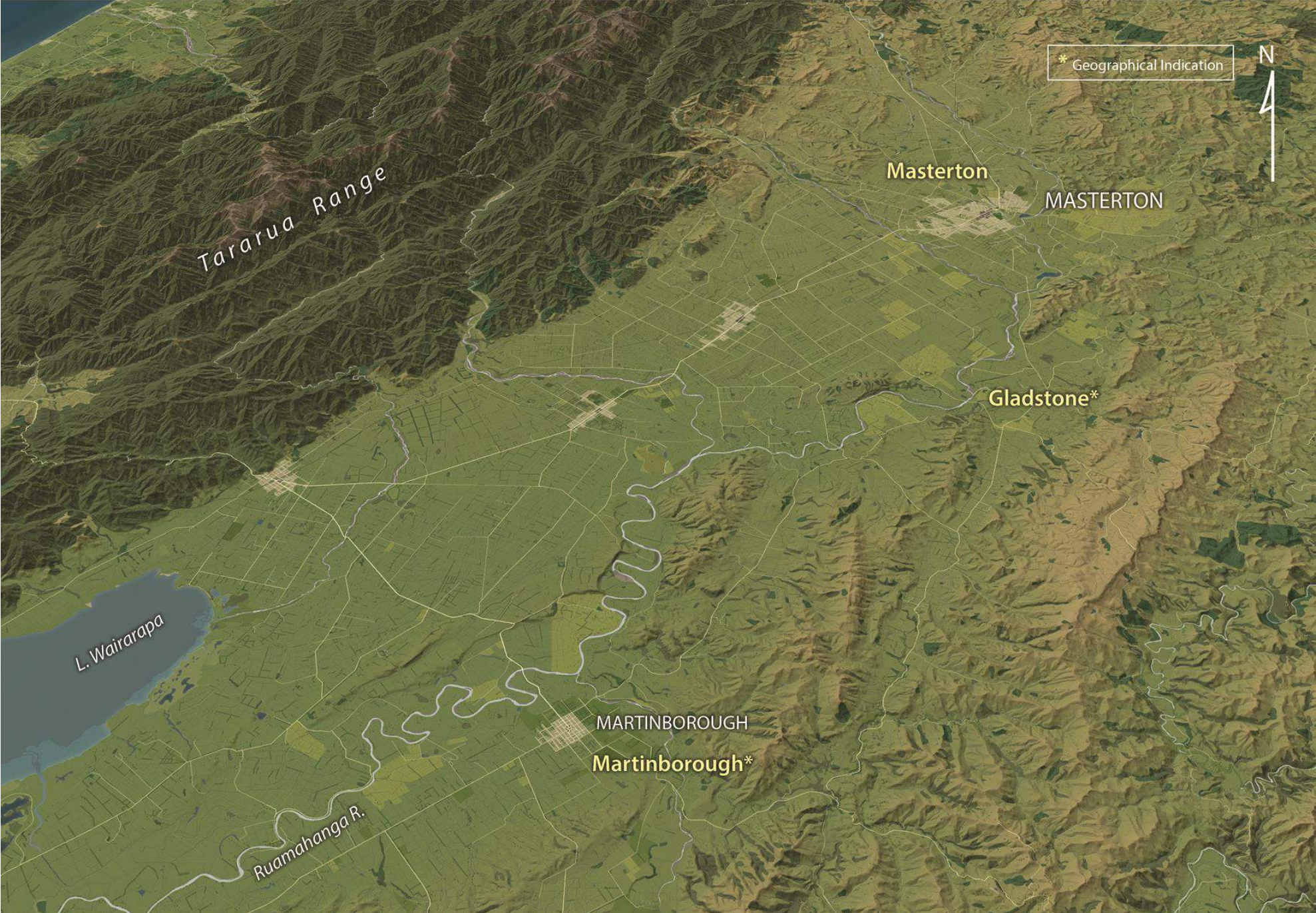
TOTAL PRODUCING HECTARES

4

TOTAL PRODUCTION (000 TONNES)

1%

PROPORTION OF TOTAL NZ PRODUCTION (TONNES)



Tararua Range

* Geographical Indication



Masterton

MASTERTON

Gladstone*

L. Wairarapa

MARTINBOROUGH

Martinborough*

Ruamahanga R.



KEY VARIETIES

1040 HECTARES

PINOT NOIR 530ha - 51%

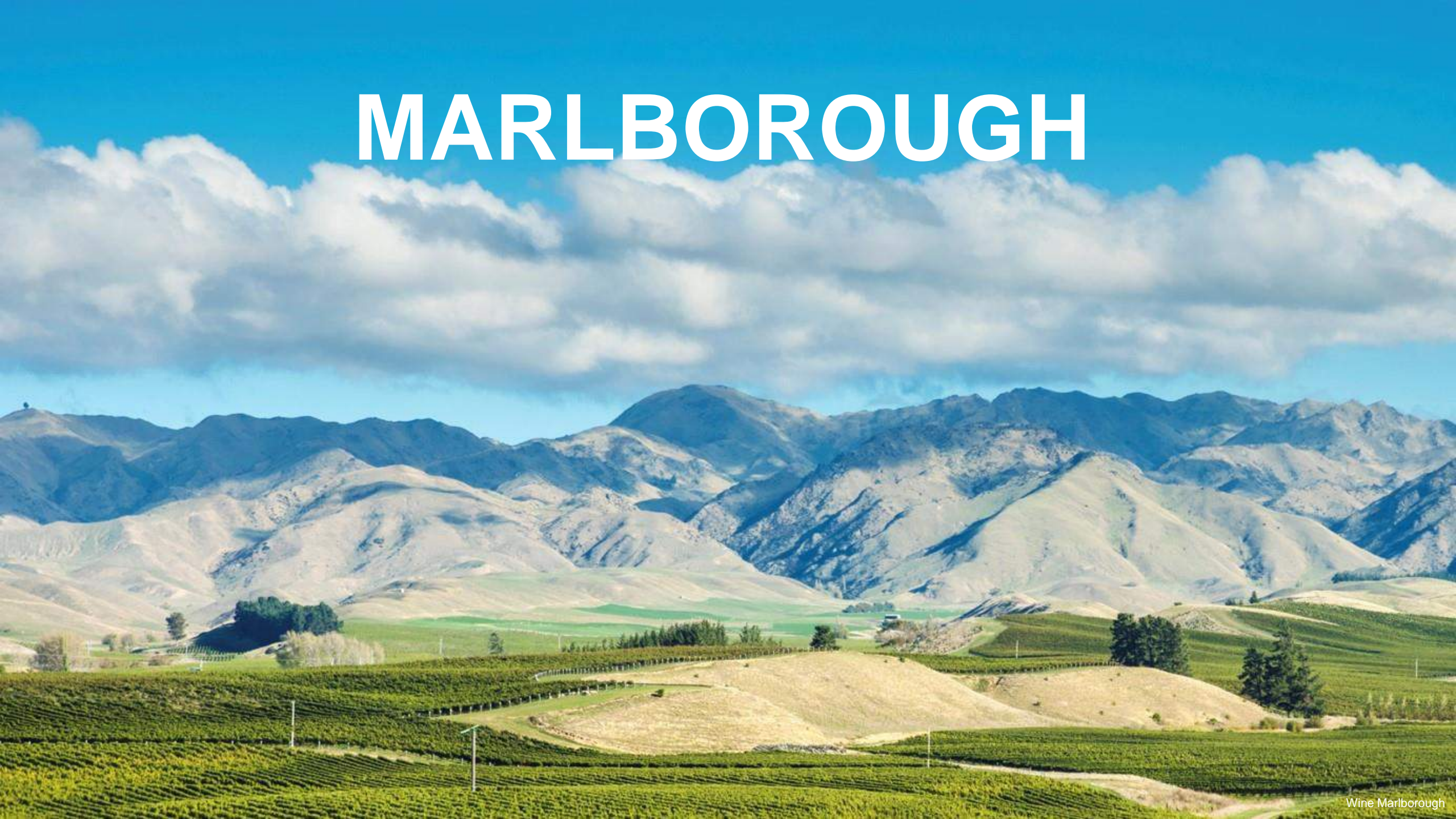
SAUVIGNON BLANC 328ha - 32%

PINOT GRIS 60ha - 6%

CHARDONNAY 54ha - 5%

OTHER (23 VARIETIES) 68ha - 6%

MARLBOROUGH



MARLBOROUGH

27,808

TOTAL PRODUCING HECTARES

305

TOTAL PRODUCTION (000 TONNES)

76%

PROPORTION OF TOTAL NZ PRODUCTION (TONNES)



Richmond Range

Wairau Valley

Southern Valleys

Awatere Valley

Wairau R.

Cloudy Bay

RENWICK

BLENHIM

Wither Hills

SEDDON

Awatere R.









KEY VARIETIES

27,808 HECTARES

SAUVIGNON BLANC 22,369ha - 80%

PINOT NOIR 2,663ha - 10%

PINOT GRIS 1,162ha - 4%

CHARDONNAY 1,086ha - 4%

OTHER (28 VARIETIES) 528ha - 2%

NELSON



NELSON

1,102

TOTAL PRODUCING HECTARES

12

TOTAL PRODUCTION (000 TONNES)

3%

PROPORTION OF TOTAL NZ PRODUCTION (TONNES)



Mt Arthur Range

Motueka R.

MOTUEKA

Tasman Bay

Kina Peninsula

Moutere Hills

UPPER MOUTERE

MAPUA

NELSON

Waimea Plains

Waimea R.

RICHMOND

BRIGHTWATER

WAKEFIELD



KEY VARIETIES

1,102 HECTARES

SAUVIGNON BLANC 611ha - 55%

PINOT NOIR 175ha - 16%

PINOT GRIS 122ha - 11%

CHARDONNAY 111ha - 10%

OTHER (20 VARIETIES) 83ha - 8%

NORTH CANTERBURY



NORTH CANTERBURY

1,369

TOTAL PRODUCING HECTARES

12

TOTAL PRODUCTION (000 TONNES)

2%

PROPORTION OF TOTAL NZ PRODUCTION (TONNES)



Southern Alps

Waipara Valley*

WAIPARA

Pacific Ocean

CHRISTCHURCH

Banks Peninsula

ASHBURTON

Banks Peninsula







KEY VARIETIES

1,369 HECTARES

PINOT NOIR 423ha - 31%

SAUVIGNON BLANC 394ha - 29%

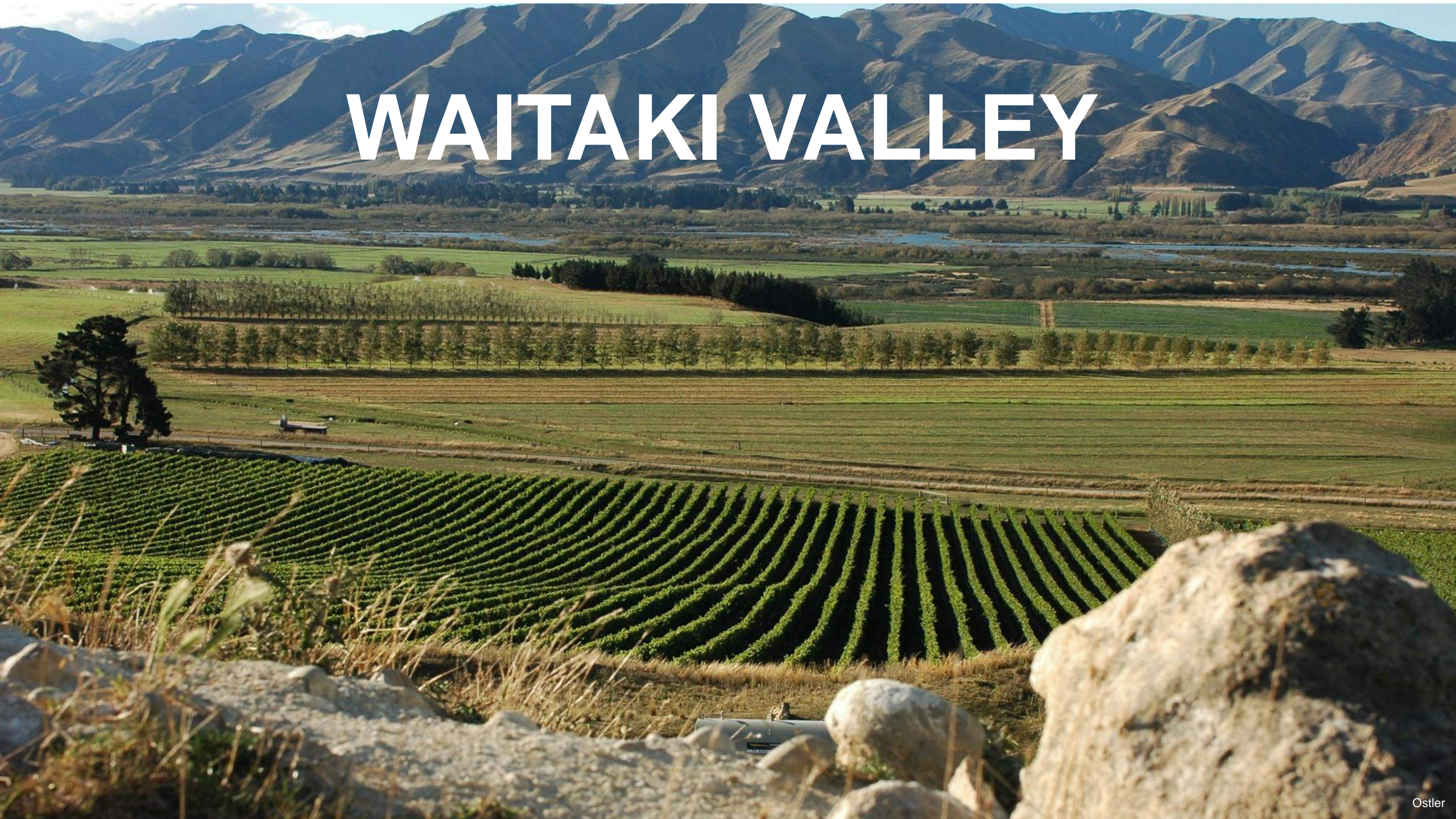
PINOT GRIS 204ha - 15%

RIESLING 194ha - 14%

CHARDONNAY 90ha - 7%

OTHER (20 VARIETIES) 64ha - 5%

WAITAKI VALLEY



WAITAKI VALLEY, NORTH OTAGO

59

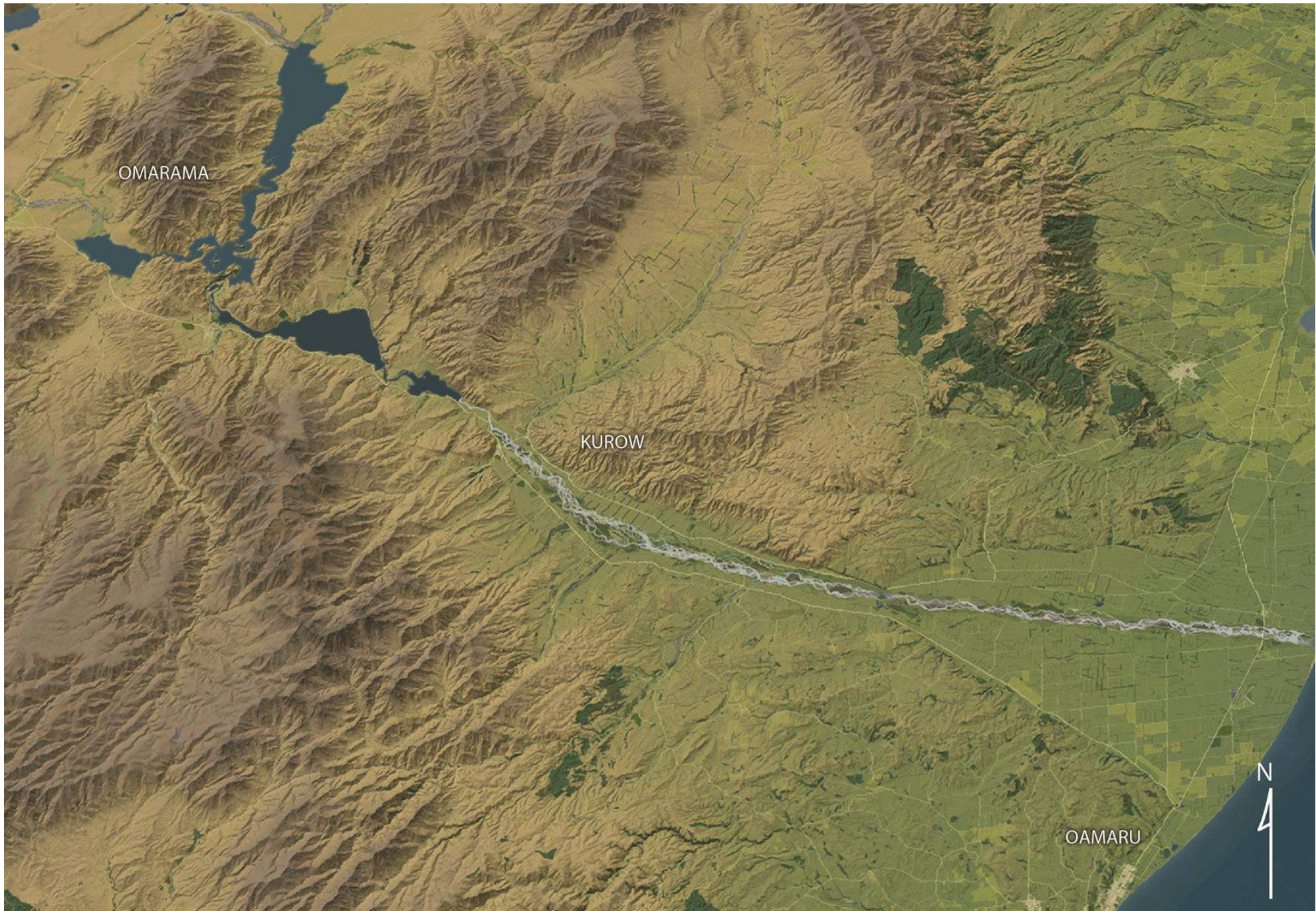
TOTAL PRODUCING HECTARES

<1

TOTAL PRODUCTION (000 TONNES)

<1%

PROPORTION OF TOTAL NZ PRODUCTION (TONNES)



KEY VARIETIES

59 HECTARES

PINOT NOIR 29ha - 49%

PINOT GRIS 14ha - 24%

RIESLING 6ha - 10%

CHARDONNAY 5ha - 8%

OTHER (10 VARIETIES) 5ha - 8%

CENTRAL OTAGO



CENTRAL OTAGO

1,903

TOTAL PRODUCING HECTARES

12

TOTAL PRODUCTION (000 TONNES)

3%

PROPORTION OF TOTAL NZ PRODUCTION (TONNES)







KEY VARIETIES

1,903 HECTARES

PINOT NOIR 1,555ha - 82%

PINOT GRIS 174ha - 9%

CHARDONNAY 68ha - 4%

RIESLING 64ha - 3%

SAUVIGNON BLANC 39ha - 2%

OTHER (19 VARIETIES) 30ha - 2%



Q&A