



This document is a guide to the usage of logos and icons for **#nzroseday** 2024.  
**#nzroseday** is an annual one day celebration of Rosé held on Monday 5 February 2024.

For queries and approvals please contact:  
[meredith.baldwin@nzwine.com](mailto:meredith.baldwin@nzwine.com) or [juliana.foster@nzwine.com](mailto:juliana.foster@nzwine.com)

## THE LOGO

*(available in the toolkit to download)*

Please do not redraw or distort the **#nzroseday** logo. Electronically sourced artwork should be used in all cases.

The **pink** logo is designed to be overlaid on white or pale coloured backgrounds/imagery - see examples to follow.

The **white/pink boxed** logo is designed to be used over darker or detailed backgrounds where the pink logo would be less readable - see examples to follow.

The **white/unboxed** logo is designed to be used only over darker or detailed backgrounds where the logo would be completely legible

STACKED VERSION

RIBBON VERSION



Rose Day 24\_Stacked\_PinkBox\_logo



Rose Day 24\_Ribbon\_PinkBox\_logo



Rose Day 24\_Stacked\_Pink\_logo



Rose Day 24\_Ribbon\_Pink\_logo



Rose Day 24\_Stacked\_WHT\_REV\_logo

Rose Day 24\_Ribbon\_WHT\_REV\_logo

## CLEAR SPACE REQUIREMENTS

The clear space requirement is determined by the height of the o from the logo or a minimum of 5mm.



## FONTS

New Zealand Winegrowers has used the below fonts for the logo and tagline copy. We encourage you to use these or similar.

Tagline copy

**GOTHAM MEDIUM**

Body copy

**Gotham Medium**  
 Gotham book

---

## COLOUR PALATE

The **#nzroseday** pink is recommended if using areas of block colour.



**nzroseday pink**

C:0 M:38 Y:28 K:0  
R: 248 G:174 B:163  
#f8aea3

---

## #nzroseday logo examples of use

The **white** logo is designed to be used **ONLY** over a solid or dark background so it can be clearly seen. In all other cases use the pinkboxed or Pink version of the logo.

✓ acceptable use of #nzroseday logo



✗ unacceptable use of #nzroseday logo



---

## LOGO USAGE

The minimum size that the **#nzroseday** is intended for social media purposes.  
For Instagram and facebook, refer to the 20% [text rule](#) for optimum clarity against images.

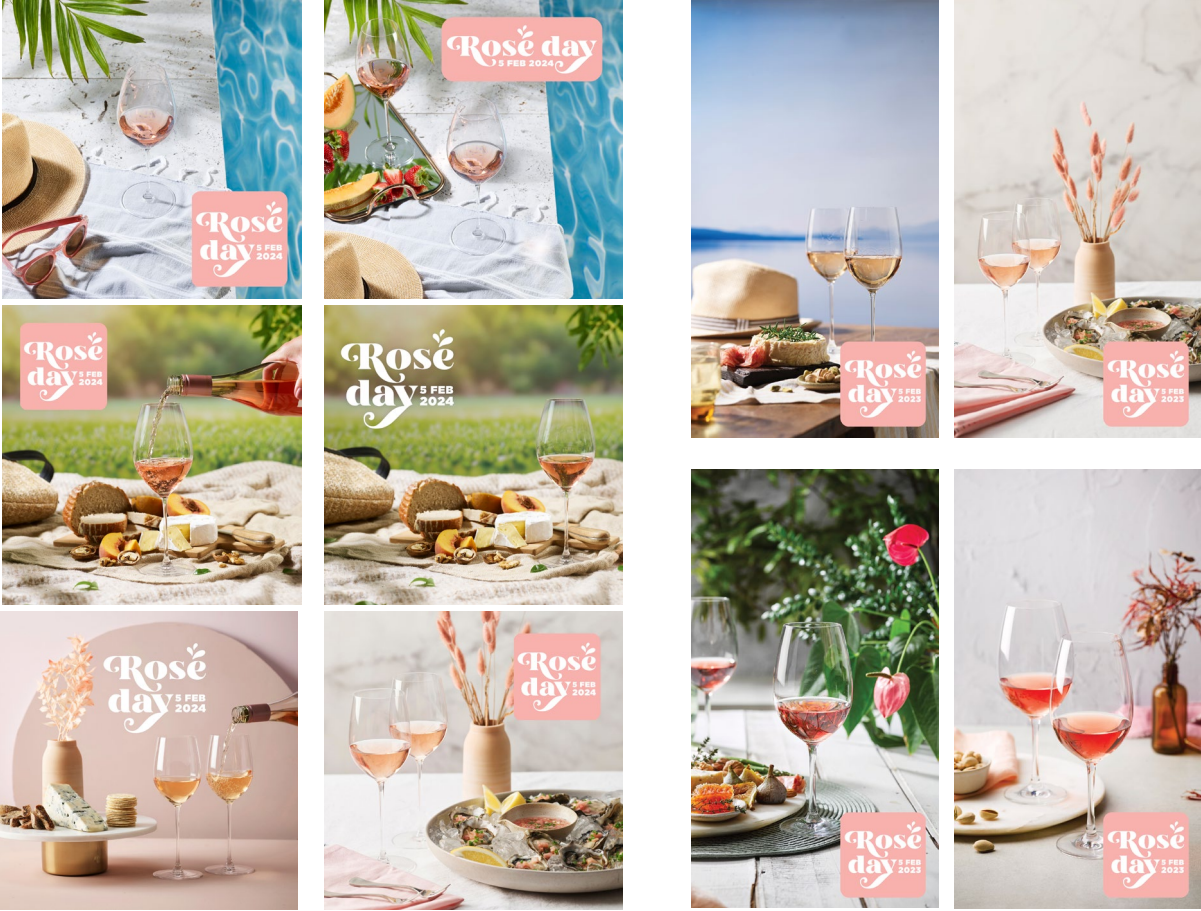
---

## SOCIAL TILE EXAMPLES





**Social Media Tiles/IG Stories**  
(available in the toolkit to download)



**Supporting imagery**  
(available in the toolkit to download)



#nzroseday