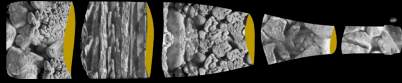


11am | Monday 3rd July | **Zoom Tasting with
Anne Krebiehl MW and Rebecca Gibb MW**



ALSACE ROCKS!

New Zealand Rolls!



New Zealand Wine
Altogether Unique.

Alsace Rocks and New Zealand Rolls ... and they really do. On so many different levels, strata, altitudes...

Our tasting today is not about comparing, but rather showcasing just a small selection of the stunning wines being produced in this region of France which are highly individual and distinctive, and also in New Zealand: a youthful wine industry which produces only 1% of the world's wine, but has an international presence and reputation that far exceeds that, due to its diversity, world-leading focus on sustainability, and of course its distinctly New Zealand expression in the glass.

The wines have been selected by Anne Krebiehl MW and Rebecca Gibb MW, and you'll taste them in pairs – a brace of field blends, then Pinot Gris, Riesling, Gewurztraminer, Pinot Noir and we'll finish with Anne and Rebecca's 'Rock Star' wines.

The Alsace region is a rich and complex mosaic of microclimates and soils, and you can taste this in its wines. The vineyards are situated in the valleys and on the hillsides of an area 120kms long, between 2-15kms wide, which is sheltered on each side by mountain ranges and contains 13 different geological formations. With 1,800 hours of sunshine per annum in Colmar, Alsace is the second sunniest region in France. Its history is as rich as its terroir, having belonged to both France and Germany at different times, and the highly individual wines – made from 7 main varietals – bear testament to this. Winemaking in Alsace remains very much a family or co-operative affair, with some domaines going back 14, 15 or even 16 generations. The region is also moving with the times, and recent years have seen talented newcomers arrive on the scene, many of which are next generation family members.

New Zealand has ten main wine growing regions with each showing great diversity in climate and terrain. No region is more than 130km (80 miles) from the sea and the proximity of vineyards to the ocean has a pronounced effect on the character of New Zealand wines. Mild, sunny summers and marked differences between day and night temperatures in many regions slow the ripening of the grapes and allow them to develop pure, intense varietal flavours. This is the foundation of New Zealand wines' elegance and power, and helps explain their famed balance, structure and food friendliness. And with growing regions extending 1,600 km (1,000 miles) — from latitude 36° South in the subtropical north to latitude 46° South in the mountainous south (the most southerly vineyards in the world) — regional diversity is dramatic, enabling a striking array of wine varieties and styles to flourish.

We encourage you to share feedback and comments, and ask questions, during the tasting. If you're posting on social media, don't forget to include #AlsaceRocks #nzwine. We will be recording the session and we will share the link to the replay video afterwards.

For more information about Alsace and New Zealand wines, please visit **vinsalsace.com** and **nzwine.com**

If you have any further queries about Alsace and New Zealand or about the wines featured today, please contact **Emma Wellings** | emma@ew-pr.co.uk or **Chris Stroud** | cstroud@nzwine.com.

We hope you enjoy the tasting.



PRESENTERS



Anne Krebiehl MW German-born but London-based, Anne is a widely published freelance wine writer. In January 2023, she became editor for Germany, Alsace and Austria for Vinousmedia.com. In June 2021, she launched Falstaff Magazine in the UK and was its editor-in-chief until its merger with another title. Prior to that she was the contributing editor for Austria, Alsace, Burgundy and England for US Wine Enthusiast Magazine. She writes for The World of Fine Wine, Decanter and TheBuyer.net. She lectures, particularly on German wine, judges international wine competitions and is a panel chair at the International Wine Challenge. She completed her WSET Diploma in 2010 and was admitted to the Institute of Masters of Wine in September 2014. She loves high-acid wines and her work often focuses on Pinot Noir, Riesling and traditional method sparkling wines. She has harvested and helped to make wine in New Zealand, Germany and Italy. Her first book, The Wines of Germany, published in Infinite Ideas' Classic Wine Library, appeared in September 2019 and won the Domaine Faiveley International Wine Book Of The Year 2020 award at the Louis Roederer International Wine Writers' Awards. In her own time, Anne loves to swim, garden and entertain.



Rebecca Gibb MW is the author of *The Wines of New Zealand* (2018) and *Vintage Crime* (publish date 10 October 2023). She reviews New Zealand and Loire Valley wines for Vinous Media, owns wine jigsaw business Puzzle Cru and teaches WSET.

A former winner of the UK's Young Wine Writer of the Year and the inaugural Louis Roederer Emerging Wine Writer of the Year, Rebecca became a Master of Wine in 2015. In a record class of 24 graduates, she was awarded the Outstanding Achievement Award and the Madame Bollinger medal in recognition of her outstanding tasting ability. Having lived in New Zealand for six years (2010-2016), Rebecca returned to England, where she lives in the Lake District with her Kiwi husband and son.

ALSACE



**CONSEIL
INTERPROFESSIONNEL
DES VINS D'ALSACE**
12 avenue de la Foire aux Vins
BP 12127
68012 COLMAR CEDEX
Tél. : +33 (0)3 89 20 16 20
civa@civa.fr

#DrinkAlsace
ALSACEWINE.COM

**VA VINS
ALSACE**

KEY STATS

Total planting
in Alsace per year



15,550 ha
of vineyards



911,000 HL
= 118+ million
bottles per year

88% white wine
'Alsace' 69%
'Crémant d'Alsace' 27.5%
'Grand Cru' 3.5%



Latitudes variation

Most vines are planted at an altitude of
660 ft | 200m and 1,320 ft | 400m, S-S/E
facing | 2 to 15KM wide and 120km long



Between
500 – 650mm
rainfall per year



1,800hrs of
sun per year
in Colmar



Total planting of the different varietals in Alsace:

Pinot Blanc | 3,336 ha | 21%
Riesling | 3,219 ha | 21%
Gewurztraminer | 3,023 ha | 19%
Pinot Gris | 2,483 ha | 16%
Pinot Noir | 1,797 ha | 12%
Sylvaner | 724 ha | 5%
Muscat | 305 ha | 2%
Others | 330 ha | 2%
Blend | 312 ha | 2%

13 Geological formations

MOUNTAIN EDGE

GRANITE & GNEISS



SCHIST



VOLCANO-
SEDIMENTARY



SANDSTONE



VOSGES FOOTHILLS

LIMESTONE



CALCAREOUS SANDSTONE



MARLY SANDSTONE



MARLY LIMESTONE



MARLY CLAY



MARLY CALCAREOUS SANDST



IN PLAIN

ALLUVIAL



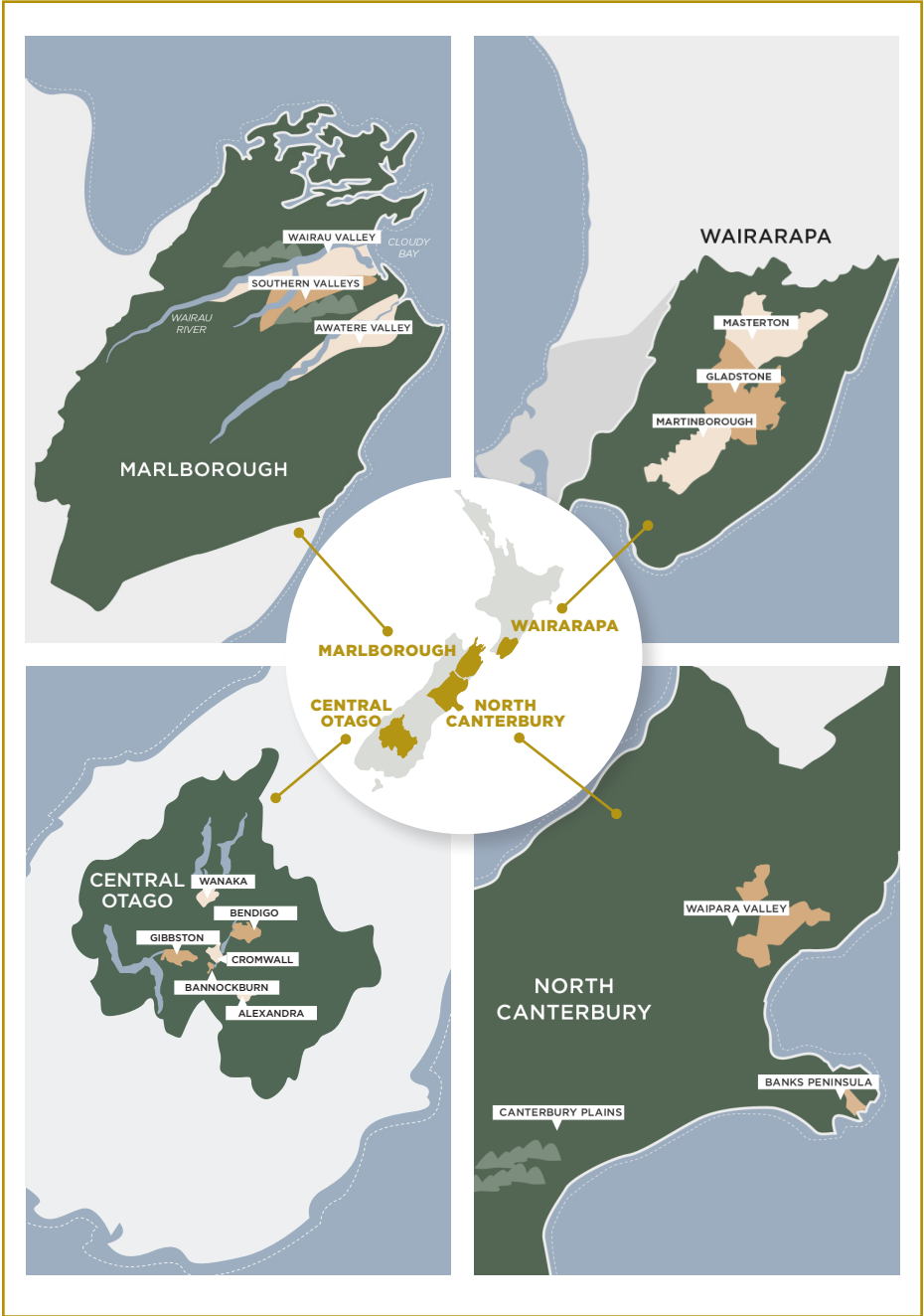
LOESS & LEHM



COLLUVIAL AND
PIEMONT



NEW ZEALAND



KEY STATS

Total planting
in New Zealand
per year



41,603 ha
of vineyards



2022 Production
383 Million litres



White Wines =
82% of plantings
87% of production



Alsatian Varietal Plantings in NZ ha

Pinot Noir | 5,807 ha | 14%

Pinot Gris | 2,809 ha | 6.8%

Riesling | 619 ha | 1.5%

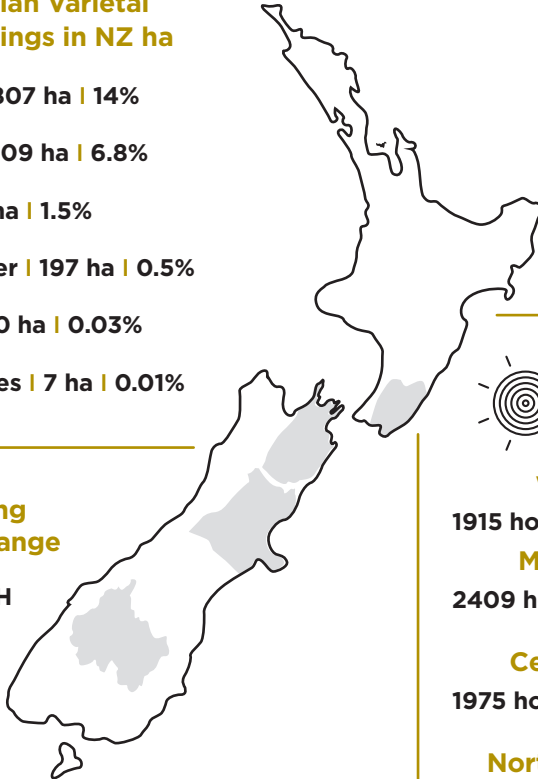
Gewürztraminer | 197 ha | 0.5%

Pinot Blanc | 10 ha | 0.03%

Muscat Varieties | 7 ha | 0.01%

Grape Growing Latitudinal Range

35°-45° SOUTH



Wairarapa

1915 hours | 979mm

Marlborough

2409 hours | 655mm

Central Otago

1975 hours | 450 mm

North Canterbury

2100 hours | 648mm



Domaine Bott-Geyl Sonnenglanz Gewurztraminer 2015

Alcohol 13% **Residual Sugar** 55 g/L **pH** 3.49 **TA** 5.90 g/L

Soil Marl-Limestone

Vine Age 30 - 50 years old

Altitude 220 - 270m

RRP £30 (£27 mix 12)

Importer Laithwaites

Website bott-geyl.com

f [bottgeyl](https://www.facebook.com/bottgeyl) **@** [bott_geyl](https://www.instagram.com/bott_geyl) **t** [bott_geyl](https://twitter.com/bott_geyl)



Muré Cuvée V Pinot Noir 2020

Alcohol 13%

Residual Sugar <1,00

pH 3.59

TA 5.90 g/L

Soil Clay-Limestone

Vine Age 20 years old

Altitude 300m

RRP £34.97

Importer Berkmann Wine Cellars

Website mure.com

 [mure.clos.st.landelin](https://www.facebook.com/mure.clos.st.landelin)  [domaine_mure](https://www.instagram.com/domaine_mure)



Escarpment Martinborough Pinot Noir 2020, Wairarapa

Alcohol 13.5% **Residual Sugar** N/A **pH** 3.57 **TA** 6.3 g/L

Soil Alluvial gravel

Vine Age Average 20 years

Altitude 60-70 m

RRP £26.00

Importer Seckford's

Email David Cartwright - dc@seckfordagencies.co.uk

Website escarpment.co.nz

f [escarpmentvineyard](https://www.facebook.com/escarpmentvineyard) **ig** [escarpmentvineyard](https://www.instagram.com/escarpmentvineyard)

Notes



Alsace

Foulques Aulagnon

Export Marketing Manager

f.aulagnon@civa.f

vinsalsace.com

 vinsalsace

 vinsalsace

 VinsAlsace

#AlsaceRocks



New Zealand Wine
Altogether Unique.

New Zealand Winegrowers


Chris Stroud

Market Manager - Europe

cstroud@nzwine.com

nzwine.com

 nzwinegrowers

 nzwinegrowers and nzwineeurope

 nzwine

#nzwine